

MX-Series LCD Monitor 24" | 22"

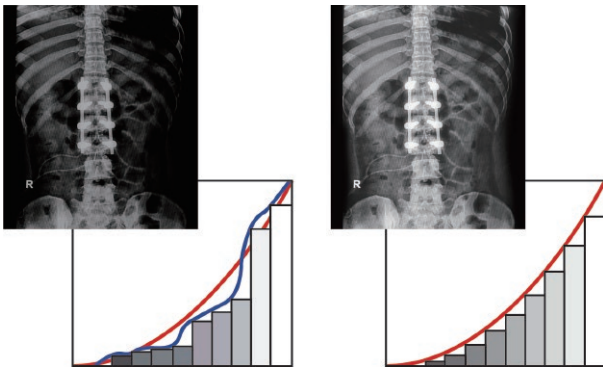


Professional Clinical Review Displays of High Performance, Easy Maintenance



The MX-Series displays are designed for durability and easy cleaning. It features Full HD resolution, IEC/EN 60601-1 standard and DICOM Part 14 specification compliance, and provides excellent image quality, colour reproduction and image contrast. The MX-Series is specifically designed for 24/7 operation in demanding medical settings.





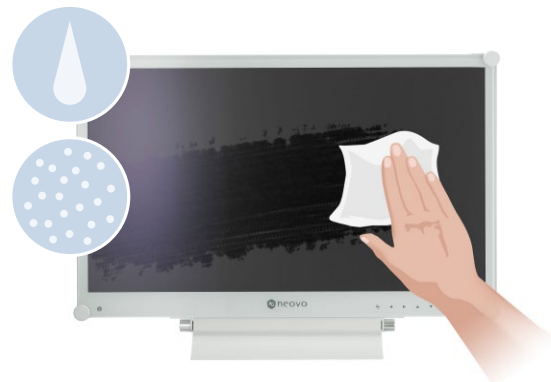
DICOM Mode

Consistent Image Clarity

The MX-Series is compliant with the DICOM Part 14 standard specifications. This calibration function corrects gamma and luminance to achieve the smooth grayscale that is required for the accurate and consistent appearance of clinical data and other review images.

Easy to Clean and Reliable Design

The anti-acid and anti-alkali coating treatment of the NeoV™ Optical Glass help the MX-Series withstand alcohol and other commonly used cleaning solutions. With the displays also bolstered by metal casing, this proprietary glass technology shields them from scratches and other damage.



Versatility and Multitasking

Multiple signal source options, including HDMI and DisplayPort 1.2, offer the versatility for the MX-Series to integrate with other instruments. Its broad connectivity enables the PiP/PbP capability that makes multitasking possible—studying different images or matching medical records—in a single display.

Medical-Grade Safety Certification

The MX-Series adopts a specially designed low-voltage medical-grade power supply to ensure safety, performance, and reliability in any professional medical environment. Compliance with the IEC/EN60601-1 standards ensures their safe and reliable performance in demanding medical settings.



IEC/EN 60601-1
Medical-Grade

Features

- Full HD 1920 x 1080 resolution
- Anti-Burn-in™ technology prevents image ghosting
- NeoV™ Optical Glass and metal housing for excellent cleanability and protection
- Crisp 20,000,000:1 dynamic contrast ratio
- Compliance with DICOM Part 14 with calibrated greyscale and brightness
- EN60601-1 and IEC60601-1 medical certification
- Equipotential terminal connector
- White exterior design for easy contaminant detection
- PiP/PbP functions enable multi-source viewing simultaneously
- Image Enhancer: 3D Deinterlace / Noise Reduction
- Versatile connectivity: DisplayPort, HDMI, DVI, VGA
- Front-sided IP22 Compliant (IEC 60529 Standard)
- EcoSmart Sensor automatically adjusts brightness level according to ambient lighting conditions
- Flicker-free display technology reduces eye discomfort
- Black-level adjustment for presenting more details in dark images
- VESA mounting for flexible installation in healthcare settings



Specifications

MX-24

MX-22

		MX-24	MX-22
Panel	Panel Type Panel Size Max. Resolution Pixel Pitch Brightness Contrast Ratio Viewing Angle (H/V) Display Colour Response Time	LED-Backlit TFT LCD (TN Technology) 23.5" FHD 1920 x 1080 0.272 mm 300 cd/m ² 20,000,000:1 (DCR) 170°/160° 16.7M 3 ms	LED-Backlit TFT LCD (TN Technology) 21.5" FHD 1920 x 1080 0.248 mm 250 cd/m ² 20,000,000:1 (DCR) 170°/160° 16.7M 3 ms
Frequency (H/V)	H Freq. V Freq.	24 kHz-83 kHz 50 Hz-75 Hz	24 kHz-83 kHz 50 Hz-75 Hz
Input	DisplayPort HDMI DVI VGA	x 1 1.4 x 1 24-Pin DVI-D x 1 15-Pin D-Sub x 1	x 1 1.4 x 1 24-Pin DVI-D x 1 15-Pin D-Sub x 1
Audio	Audio In Internal Speakers	Stereo Audio Jack (3.5 mm) 2W x 2	Stereo Audio Jack (3.5 mm) 2W x 2
Power	Power Supply Power Requirements On Mode Stand-by Mode Off Mode	External DC 12V, 2.5A 19W (On) < 0.5W < 0.5W	External DC 12V, 2.5A 21W (On) < 0.5W < 0.5W
NeoV™ Optical Glass	Thickness Reflection Rate Transmission Rate Hardness	3.0 mm (0.12") < 1% > 97% > 9H	3.0 mm (0.12") < 1% > 97% > 9H
Operating Conditions	Temperature Humidity	0°C-40°C (32°F-104°F) 10%-90% (non-condensing)	0°C-40°C (32°F-104°F) 10%-90% (non-condensing)
Storage Conditions	Temperature Humidity	-20°C-60°C (-4°F-140°F) 5%-95% (non-condensing)	-20°C-60°C (-4°F-140°F) 5%-95% (non-condensing)
Mounting	VESA FPMPMI	Yes (100 x 100 mm & 75 x 75 mm)	Yes (100 x 100 mm & 75 x 75 mm)
Stand	Tilt	0° to 15°	0° to 15°
Security	Kensington Security Slot	Yes	Yes
Dimensions	w/Base (W x H x D) Packaging (W x H x D)	562.4 x 396.8 x 155.0 mm (22.1" x 15.6" x 6.1") 672.0 x 517.0 x 204.0 mm (26.5" x 20.4" x 8.0")	513.2 x 368.5 x 155.0 mm (20.2" x 14.5" x 6.1") 614.0 x 477.0 x 204.0 mm (24.2" x 18.8" x 8.0")
Weight	w/Base Packaging	7.8 kg (17.2 lb) 10.1 kg (22.3 lb)	6.7 kg (14.7 lb) 8.8 kg (19.4 lb)
Regulation Approval	Certification & Compliance	CE, IEC/EN 60601-1, MDD, RoHS, WEEE, REACH	CE, IEC/EN 60601-1, MDD, RoHS, WEEE, REACH
Accessories	Supplied	Power Adaptor, Power Cord, VGA Cable, Audio Cable, Quick Start Guide, Warranty Card	Power Adaptor, Power Cord, VGA Cable, Audio Cable, Quick Start Guide, Warranty Card
Optional Accessories		Wall Mount: PMK-01 Desk Mounts: DMC-01, DMC-02D, DMS-01D, DMS-01Q, ES-02 Handle: HDL-02 Ceiling Mount (Landscape only): CMP-01 + WMK-03 Wall Mounts (Landscape only): WMA-01, WMK-01, WMK-03	Wall Mount: PMK-01 Desk Mounts: DMC-01, DMC-02D, DMS-01D, DMS-01Q, ES-02 Handle: HDL-02 Ceiling Mount (Landscape only): CMP-01 + WMK-03 Wall Mounts (Landscape only): WMA-01, WMK-01, WMK-03

All specifications are subject to change without prior notice.

Copyright © 2019 AG Neovo. All rights reserved. The name AG Neovo is a trademark of AIC.

All other trademarks are the property of their respective owners.

P/C: MX2400/MX22A0 Version 2.0, 20191119



Global Headquarters

Taipei, Taiwan

EMEA Regional Headquarters

Capelle a/d IJssel, The Netherlands

North & South America Regional Headquarters

San Jose, CA, U.S.A.

Asia-Pacific Regional Headquarters

Taipei, Taiwan

Canada Sales Office

Vancouver, B.C., Canada

China Sales Office

Shanghai, China

Czech Republic Sales Office

Brno, Czech Republic

Denmark Sales Office

Støvring, Denmark

Germany Sales Office

Mechernich, Germany

Italy Sales Office

Livorno, Italy

Poland Sales Office

Warsaw, Poland

Spain Sales Office

Barcelona, Spain

Ukraine Sales Office

Lviv, Ukraine

displays.agneovo.com