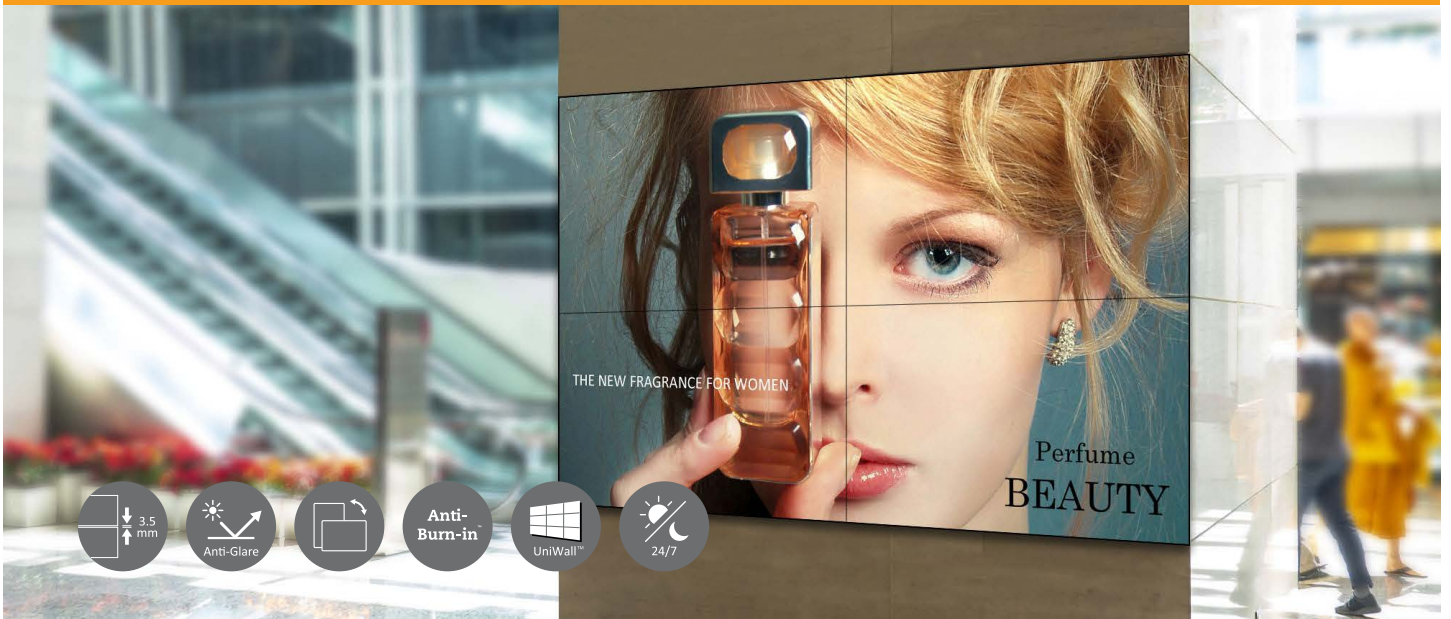
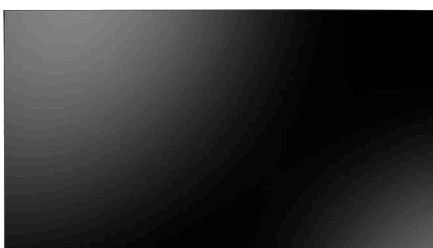


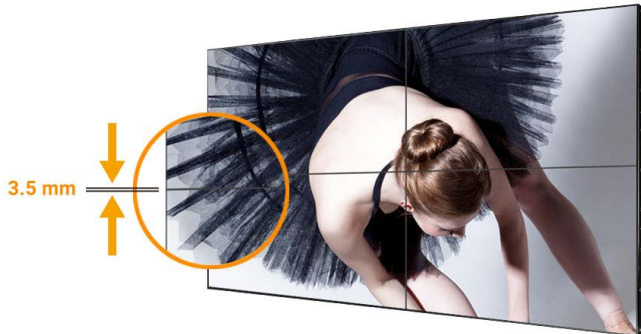
PN-Series LCD Display 55"



Ultra Narrow Bezel Displays for Immersive Visual Experience

The PN-Series ultra-narrow bezel displays are designed for professional and commercial video wall applications. Given its built-in scheduler, OPS slot, and tiling function, these high-end displays are easy to set up and maintain. With its up to 500 nits of brightness, anti-reflective panel, visually stunning video walls can be displayed in demanding environments — from large public venues to 24/7 operation control rooms.





Immersive Visual Experience

55" ultra-narrow 3.5 mm bezel-to-bezel professional video wall displays create seamless images for an immersive visual experience, while the flexible landscape or portrait display orientation suits favourable content layouts and fulfills different applications.

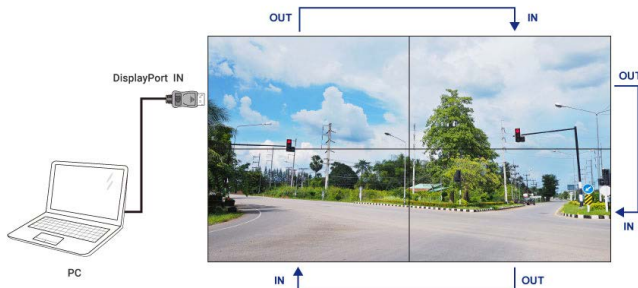
High Visibility and Low Power Consumption

Anti-glare treatment with haze 28%, high contrast, wide viewing angles and up to 500 nits brightness give images with superior clarity and visibility.



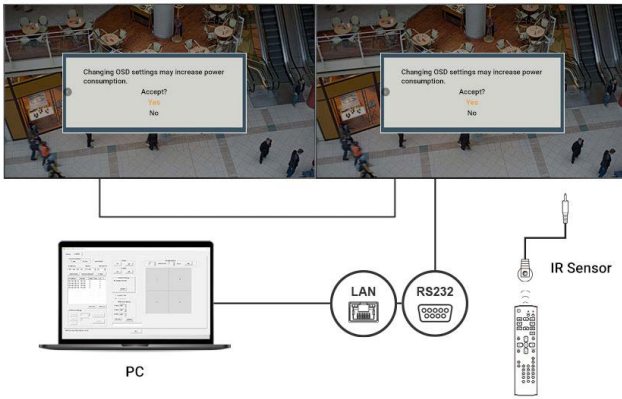
Normal panel

AG Neovo panel



DisplayPort Daisy-chain for 4K Video Wall Installation

With DisplayPort daisy chain functionality, the video and audio can be delivered to multiple AG Neovo's large format displays using DisplayPort cables to set up, configure and maintain 2x2 4K video wall installations with ease.

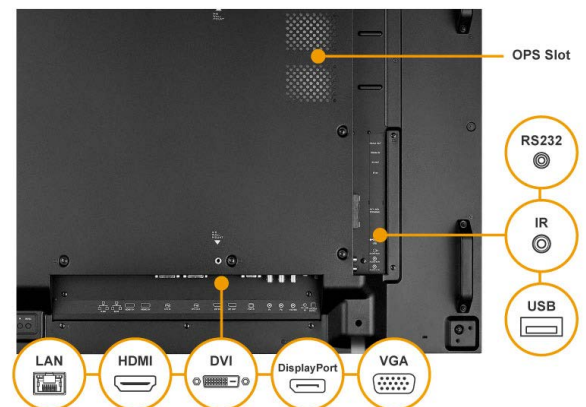


Easy Control for Multiple Displays

With IR/RS232/LAN loop-through capability, the PN-Series provides an easy and convenient single point of control for multi-display installation.

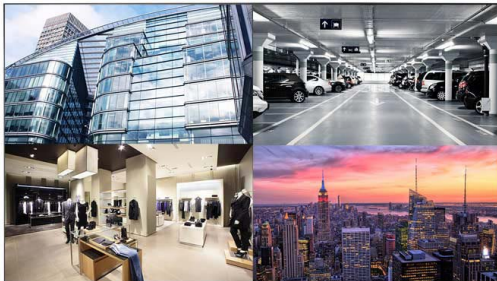
Versatile connectivity for Multimedia Playback

The PN-Series integrates diverse connectivity, including HDMI, DisplayPort, DVI, VGA and OPS slot to connect external devices. In addition, the displays support USB playback functionality and users can directly playback multimedia content via LAN connection.



Simple Content Scheduling

The built-in scheduler allows users to conveniently play content from a USB drive. Users can simply create scheduled playlists and configure playback settings with the included remote control to display personalised content.



Industry-leading Durability

Designed for 24/7 operation, these durable metal-cased displays take advantage of superior components to ensure a long product lifetime. Its integrated HeatControl Sensor automatically activates the internal cooling fans, which is crucial when the temperature rises in mission-critical installations.

Free Display Management Software

PID Command & Ctrl software allows users to control AG Neovo displays via laptop or mobile devices remotely. It provides a simple and intuitive interface for remote management, OSD-related settings, and easy control of deployed displays and video walls. The embedded UniWall™ feature allows AG Neovo displays to create up to 5x5 video walls without third-party equipment.

The software also has functions like brightness adjustment, temperature, and usage time monitoring for reliable maintenance.



Features

- Full HD 1920 x 1080 resolution
- IPS Panel technology offers high colour accuracy and wide viewing angles
- Anti-glare treatment (Haze 28%) improves visibility of the screen under ambient light
- Ultra narrow bezel 2.3mm (Top/Left) and 1.2mm (Bottom/Right) create a 3.5mm seamless video wall
- DisplayPort, DVI, RS232, LAN, IR looping support
- 500 nits of brightness for any indoors and semi-outdoor environments
- Anti-Burn-in™ technology prevents image ghosting
- Versatile connectivity: DisplayPort, HDMI, DVI, VGA, Component/Composite
- Flexible display orientation: Landscape/Portrait
- An integrated scheduler allows content programming based on time and day
- Extensive display control: RS232, RJ45 and PID Command & Ctrl software
- UniWall™ - create video walls (up to 10x10 displays) without third-party equipment
- Designed and developed for continuous 24/7 operation
- HeatControl Sensors automatically activate the internal cooling fans when temperature rises
- Selectable gamma curves optimise different kinds of images

Specifications

PN-55D2

Panel

Panel Type	LED-Backlit TFT LCD (IPS Technology)
Panel Size	54.6"
Max. Resolution	FHD 1920 x 1080
Pixel Pitch	0.630 mm
Brightness	500 cd/m ²
Contrast Ratio	1200:1
Viewing Angle (H/V)	178°/178°
Display Colour	1.07B
Response Time	5 ms
Surface Treatment	Anti-Glare Treatment (Haze 28%), 2H Hard Coating

Frequency

Frequency (H)	31 kHz-92 kHz
Frequency (V)	48 Hz-85 Hz

Signal Input

DisplayPort	1.2 x 1
HDMI	1.3b x 2
DVI	24-Pin DVI-D
VGA	15-Pin D-Sub x 1
Component	BNC x 1
Composite	BNC x 1 (Share with Component-Y)

Signal Output

DisplayPort	1.2 x 1
DVI	29-Pin DVI-I x 1 (VGA/DVI/HDMI/OPS)

External Control

IR In	3.5 mm Phone Jack
IR Out	3.5 mm Phone Jack
RS232 In	2.5 mm Phone Jack
RS232 Out	2.5 mm Phone Jack
LAN	RJ45 x 2

Other Connectivity

USB	2.0 x 1 (Service Port / Media Playback)
OPS Slot	Yes

Audio

Audio In	Stereo Audio Jack (3.5 mm), Stereo Audio Jack (RCA)
Audio Out	Stereo Audio Jack (3.5 mm)
Internal Speakers	10W x 2
Speaker Output (RMS)	10W x 2

Power

Power Supply	Internal
Power Requirements	AC 100-240V, 50/60 Hz
On Mode	100W (On)
Standby Mode	< 0.5W
Off Mode	0W

Operating Conditions

Temperature	0°C-40°C (32°F-104°F)
Humidity	20%-80% (non-condensing)

Storage Conditions

Temperature	-20°C-60°C (-4°F-140°F)
Humidity	5%-90% (non-condensing)

Mounting

VESA FPMFMI	Yes (400 x 400 mm)
-------------	--------------------

Security

Kensington Security Slot	Yes
--------------------------	-----

Dimensions

Bezel Width	2.3 mm (Top/Left) / 1.2 mm (Bottom/Right)
Product w/o Base (W x H x D)	1213.4 x 684.2 x 99.15 mm (47.8" x 26.9" x 3.9")
Packaging (W x H x D)	1395.0 x 848.0 x 280.0 mm (47.8" x 33.4" x 11.0")

Weight

Product w/o Base	24.4 kg (53.8 lb)
Packaging	32.7 kg (72.1 lb)

Regulation Approval

Certifications & Compliance	CE, CB, FCC, WEEE, RoHS, REACH
-----------------------------	--------------------------------

Accessories

Supplied	Power Cord, HDMI Cable, RS232 Cable, Remote Control, Batteries, RS232 Daisy Chain Cable, IR Sensor, Quick Start Guide
----------	---

Optional Accessories

Floor Mount	FMS-01, FMS-02, FMC-02
Floor Mount (Landscape only)	FMC-03+LMK-04, FMC-04+LMK-04
Ceiling Mount (Landscape only)	CMP-01+LMK-01
Video Wall Mount	VWM-01, VWM-02
Wall Mount	LMA-01, LMA-02
Wall Mount (Landscape only)	LMK-01, LMK-03
Desk mount (Landscape only)	DTS-01
Stand	STD-05

Global Headquarters

Taipei, Taiwan

EMEA Regional Headquarters

Capelle a/d IJssel, The Netherlands

North & South America Regional Headquarters

San Jose, CA, U.S.A.

Asia-Pacific Regional Headquarters

Taipei, Taiwan

Canada Sales Office

Vancouver, B.C., Canada

China Sales Office

Shanghai, China

Czech Republic Sales Office

Brno, Czech Republic

Denmark Sales Office

Støvring, Denmark

Germany Sales Office

Mechernich, Germany

Italy Sales Office

Livorno, Italy

Poland Sales Office

Warsaw, Poland

Spain Sales Office

Barcelona, Spain

Ukraine Sales Office

Lviv, Ukraine

www.agneovo.com